

Welcome to Tamar Valley National Landscape



**Tamar Valley
National
Landscape**



**Tamar Valley
National
Landscape**



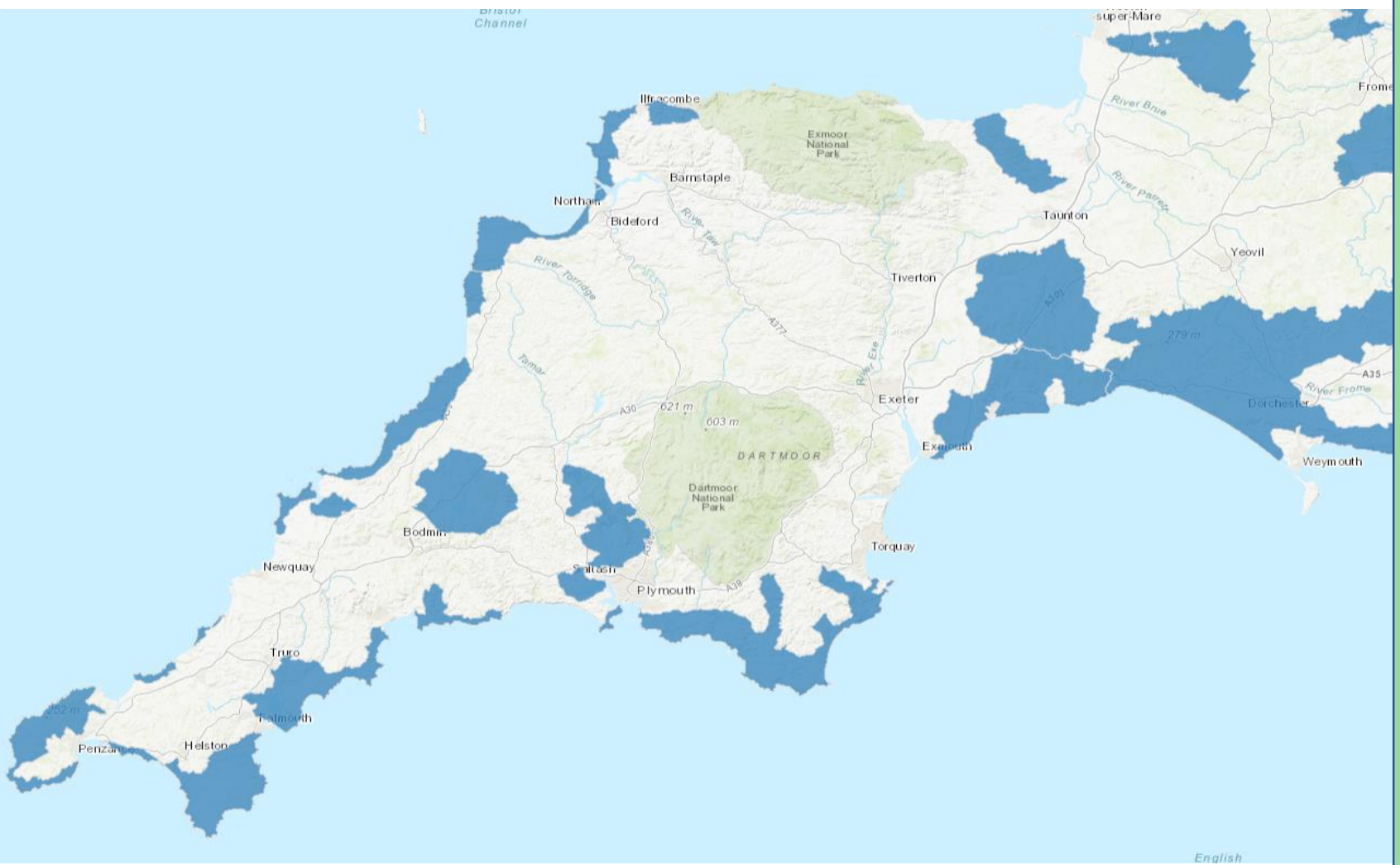
Our Partnership

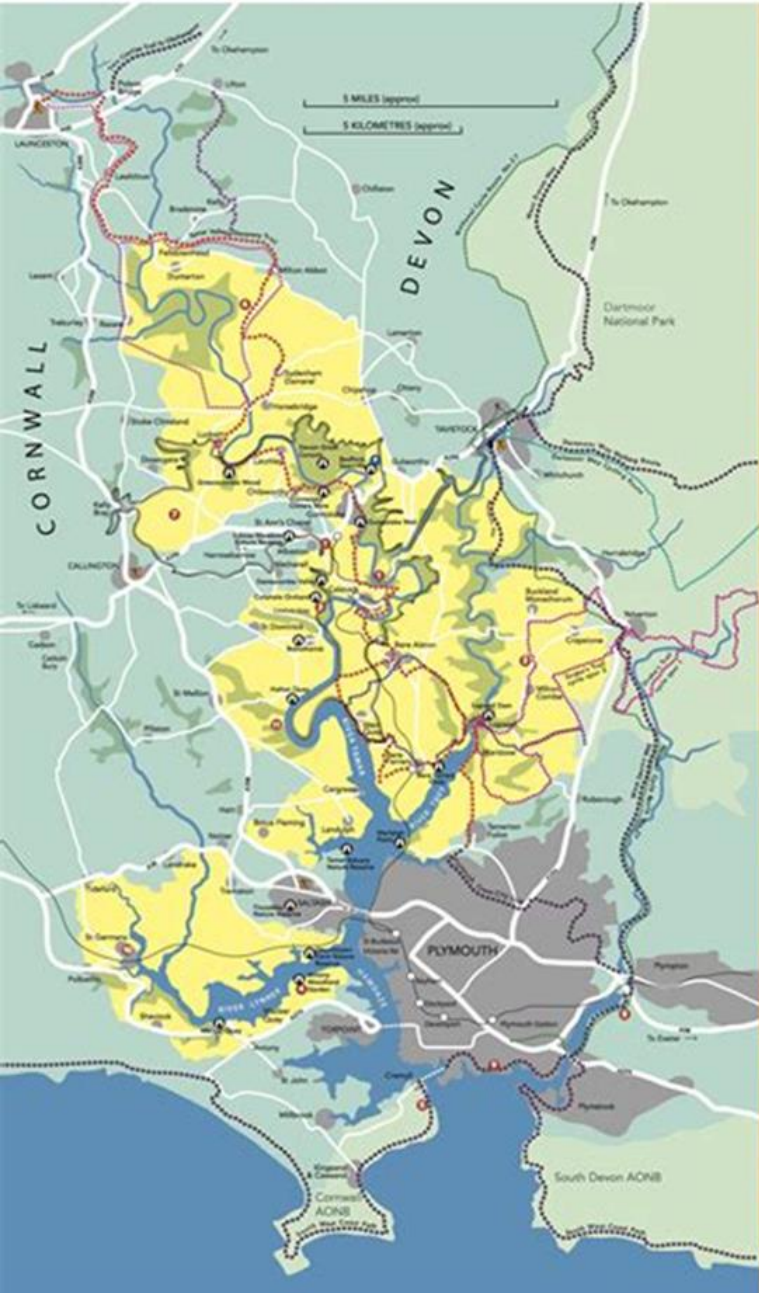
Tamar Valley
National
Landscape





Tamar Valley National Landscape





Ordnance Survey References

Please note that this map is for general guidance only. For detailed information on public rights of way in the area, please refer to the following Ordnance Survey maps:

Explorer Map No 108
Lower Tamar Valley & Plymouth (1:25000)

Explorer Map No 112
Launceston & Holworthy (1:25000)

Walking Routes

- Tamar Valley Discovery Trail
- Linking Routes
- Town trail

- Tamar Valley Rail Line (& stops)
- Tavistock Canal
- Upton Link

Cycle Routes

- NCN route 27
- Bere Cycle Route
- Dartmoor Way Cycle Route
- Drake's Trail (cycle routes 1 & 2)

Wildlife Interest point

- 1 Tamar Valley Centre & Drake's Mine

Sites of Historic Interest

- 1 Morwellham Quay
- 1 Cotehele House
- 1 Buckland Abbey
- 1 Antony House
- 1 Mount Edgumbe
- 1 Endleigh House and Nursery
- 1 Kit Hill Country Park
- 1 Saltram House
- 1 Smeaton's Tower
- 1 Fort Eliot
- 1 Fertillie Castle

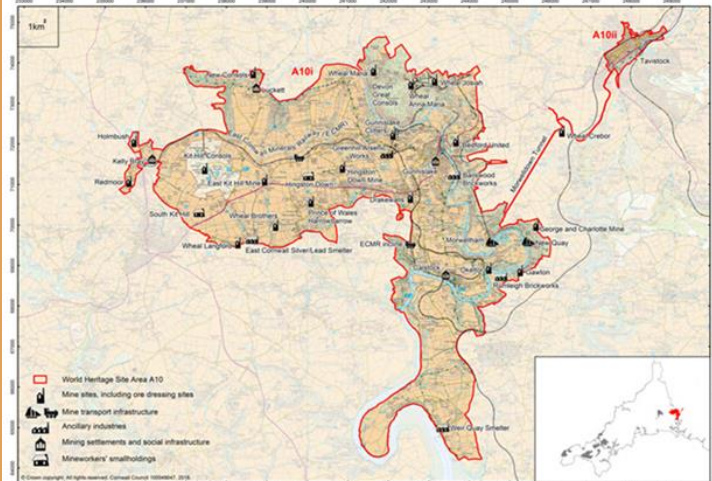
- Tamar Valley Area of Outstanding Natural Beauty
- Cornwall & West Devon Mining Landscape World Heritage Site
- Dartmoor National Park & Neighbouring AONBs
- Woodland

For information about places to stay and things to do, please visit: tamervalleytourism.co.uk or call: 0845 058 0621 or visit one of the Tourist Information Centres in the Tamar Valley.

For information about the Area of Outstanding Natural Beauty please visit: tamervalley.org.uk

For all Public Transport information, please call Traveline 0871 200 22 33

Area A10 Tamar Valley Mining District with Tavistock - Notable Sites



A Few Facts

- 15% of land in England lies within a National Landscape
- 66% of people in England live within half an hour of a National Landscape
- 30 by 30 Biodiversity Net Gain

- 27k population within the Tamar Valley National Landscape
- 67% Farmland
- 20% Woodland
- 13% County Wildlife Sites (x33)
- 11% Sites of Special Scientific Interest (x7)
- 127km of public rights of way

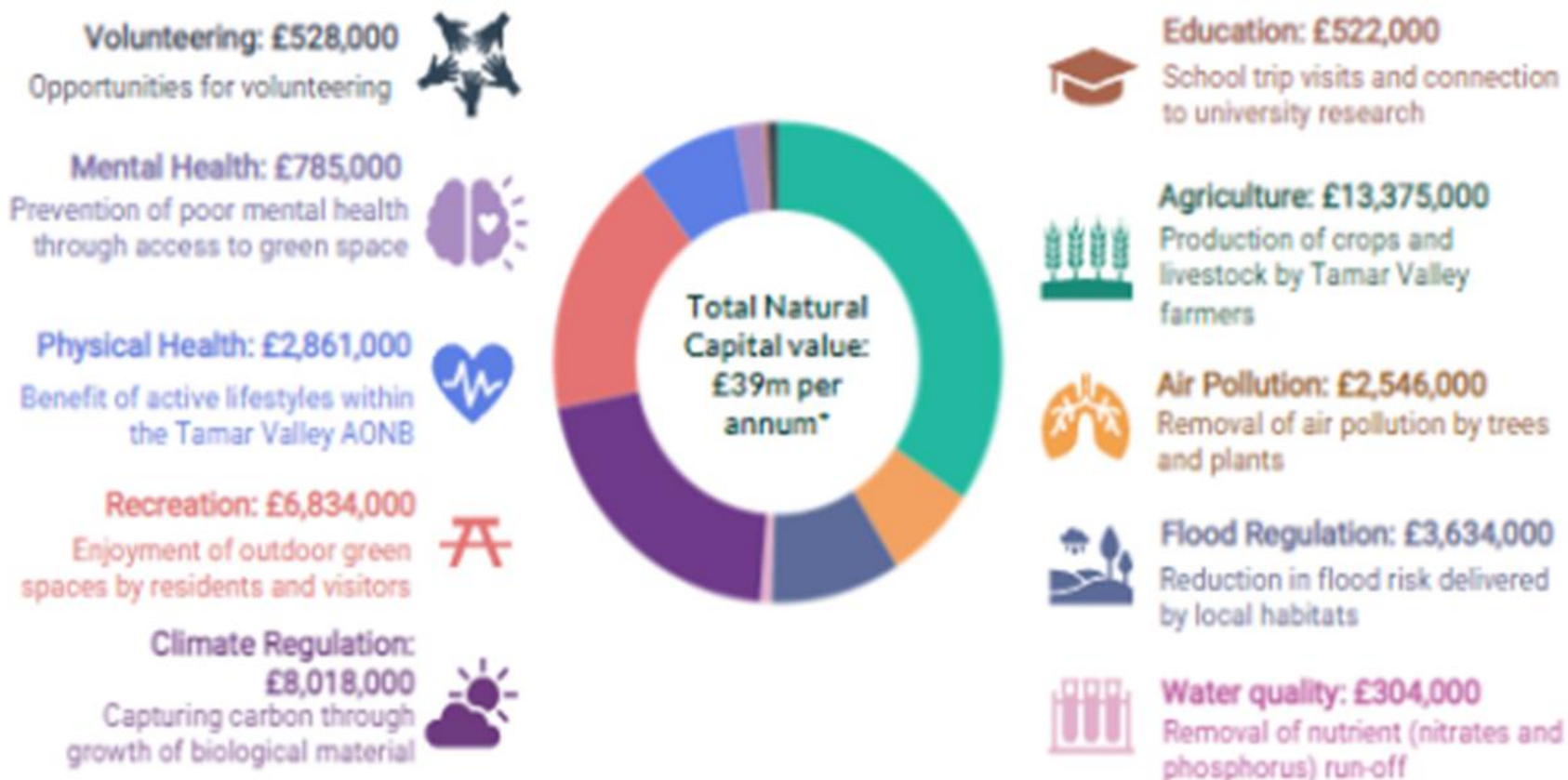
- £2bn Biodiversity Value (Eunomia)
- £39m total Natural Capital Value per annum (Eunomia)



Tamar Valley
National
Landscape



Figure 2: Tamar Valley AONB Social and Environmental Benefits



*Monetary values estimated using Eunomia's Natural Capital valuation model (2022 prices).

What We've Achieved

- Protection and enhancement of nature and heritage since 1995
- c.£16m funding secured and invested within the area
- c.340 projects delivered
- 6 Management Plans delivered
- Nature Recovery Strategy 2023-2030 created
- Dedicated, specialist team focus on protection and enhancement
- Coordination of experienced agencies and organisations
- Authentic and collaborative partner
- Lobbying voice to Defra, Natural England, MPs, HotSW LEP
- Profile within the National Landscape Association and family
- Influence



Tamar Valley
National
Landscape



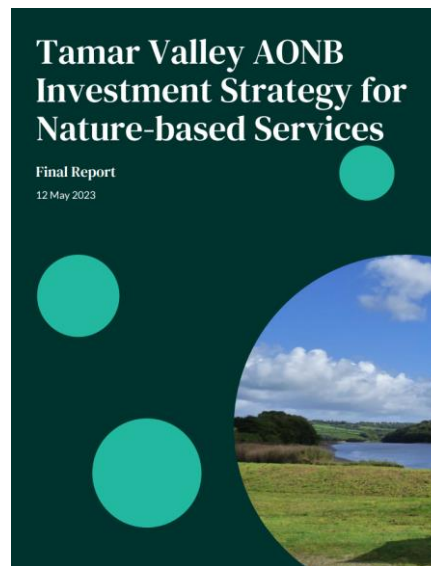


Farming in Protected Landscapes (FiPL)

Access for All Fund

Sustainable Development Fund

- Tamar Catchment Partnership
- Tamar Estuaries Consultative Forum
- Plymouth Sound UK Marine Park
- Local Nature Recovery Strategies (Devon & Cornwall)
- Plymouth & South West Devon Joint Local Plan
- Cornwall Local Plan



Tamar Valley National Landscape



National Landscapes





Tamar Valley National Landscape



What We'll Achieve Next

➤ Develop:

- Revamped visitor area within the Tamar Valley Centre
- Revamped interpretation signage across the Tamar Valley
- Strolls and Rolls promotions
- Climate Change Adaptation Plan
- Woodland Management Plan
- Opportunities for Nature Recovery
- Next Management Plan (2025-2030)
- Roadmap to 2050

➤ Deliver:

- State of the National Landscape report
- Habitat Regulation Assessment report
- Strategic Environmental Assessment report
- High-level Natural Capital Investment Strategy



Tamar Valley
National
Landscape



Nature Recovery Plan 2023-2030

Identifying best opportunities to support nature recovery in the Tamar Valley National Landscape

We have promised to identify 5 distinct habitat, species and connectivity opportunities within the working landscape, to focus on securing additional resources between 2024-2025 and to implement improvements by 2030

Supporting
woody habitat
creation &
management

Connecting
heathland along
the granite
ridge

Building on work
with farmers
& landowners
(Tamara Legacy &
post-FiPL)



Monitoring &
management of
SSSI & CWS

Expanding the
invasive non-
native species
control
programme

Supporting
riparian habitat
restoration

Tamar Valley
National
Landscape

Also...

➤ Continue:

- Farming in Protected Landscapes investment to March 2025
- Tamara Landscape Partnership Scheme delivery to June 2026
- Invasive species feasibility study and strategy creation

➤ Plan forward with:

- Visit Tamar Valley
- Tamar Community Trust
- Friends of Tamar Valley
- Tamar Catchment Partnership

➤ Create:

- 2024 World Heritage Site inscription 20th Anniversary
- 2025 Tamar Valley AONB designation 30th Anniversary
- 2026 New Heritage Lottery Fund project launch target
- Resource sharing with South West region's National Landscapes



Tamar Valley
National
Landscape



What We Need From You

- Your views
- Your ideas
- Your investment

Thank you!

- For more information: www.tamarvalley-nl.org.uk
- Connect with us on social media
- Sign up to our quarterly ebulletins



Tamar Valley
National
Landscape





The Tamara Landscape Partnership Scheme



Tamara Landscape Partnership Scheme Area

Tamar Valley AONB Area

CORNWALL

DEVON

LISKEARD

PLYMOUTH

TAMARA LANDSCAPE PARTNERSHIP SCHEME AREA

TAMAR VALLEY AONB AREA

TAMARA LANDSCAPE PARTNERSHIP SCHEME AREA

TAMAR VALLEY AONB AREA

Milton Abbot

Mary Tavy

Lewanick

Stoke Climsland

TAVISTOCK

Pensilva

Callington

Gunnislake

Horrabridge

St Cleer

Albaston

Calstock

Buckland Monachorum

Yelverton

Bere Alston

Milton Combe

Menheniot

Pillaton

Bere Ferrers

Hatt

Botus Fleming

Landrake

SALTASH

St Germans

PLYMOUTH

Torpoint

Looe

Torpoint

Lynher River

River Tamar

River Tavy

River Tamar

Our Partners



Tamara Landscape Partnership Scheme team



Will Darwall

Manager



Gary Lewis

Senior Heritage Officer



Chris Harris

Monitoring & Evaluation Officer



Sarah Richardson

Land Management Officer



Bryony James

Community & Volunteer Officer



Sabina Eberle

Communications Officer

Come visit and stay awhile

Key outputs

Develop, launch and promote 'Visit Tamar Valley' destination website

Training support for 100 local business and business support network developed


50 local businesses improving digital marketing and financial performance

10 volunteer tourist greeters/community ambassadors

Tamar Valley sustainable tourism charter developed and 5 green tourism workshops



<https://visittamarvalley.co.uk/>

- [THINGS TO DO](#) ▾
- [STAY](#) ▾
- [EAT](#) ▾
- [BUSINESSES](#) ▾
- [PLACES](#) ▾
- [WHAT'S ON](#) ▾
- [OFFERS](#)
- [KEY INFO](#) ▾



All footage courtesy of Kite Vision

Celebrating Tamara

Key outputs

Two large-scale celebration events,
400 participants engaged

1 Day Community Arts Festival:

- Celebrating the river and its landscape
- Likely location: Calstock
- Tentative Date: October 26th 2024
- Involving creative practitioners
- Community workshops in weeks before
- Workshop outputs exhibited on the day
- Rivers of Hope Exhibition – displays by local schools

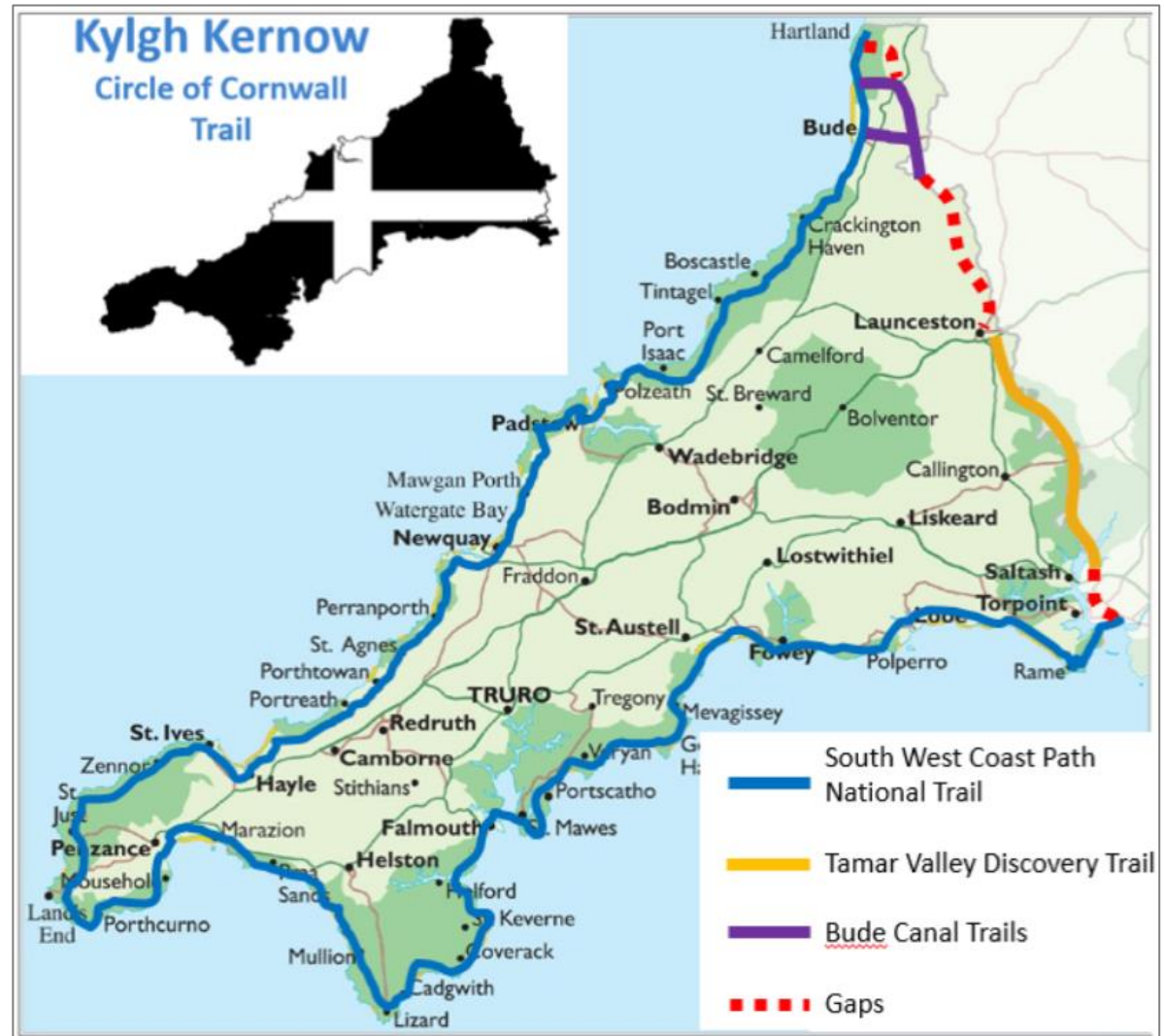




Tamara Coast to Coast Way *Hyns Tamara Arvor dh' Arvor*

- Connects N and S coasts
- Largely follows River Tamar
- 87 miles (145 km)
- Seven stages
- Circuit of Cornwall – “Kylgh Kernow”
- **Launched: July 11th**

<https://www.tamarvalley-nl.org.uk/discover-explore/walking/>



Guide Book

3000+ copies sold

- Maps & walking directions
 - Recommended route
 - Cornish route
 - Link routes
 - Circular routes
- Ease of access to routes – elevation diagrams
- Amenities en route
- Points of interest – esp. historical
- Many pics

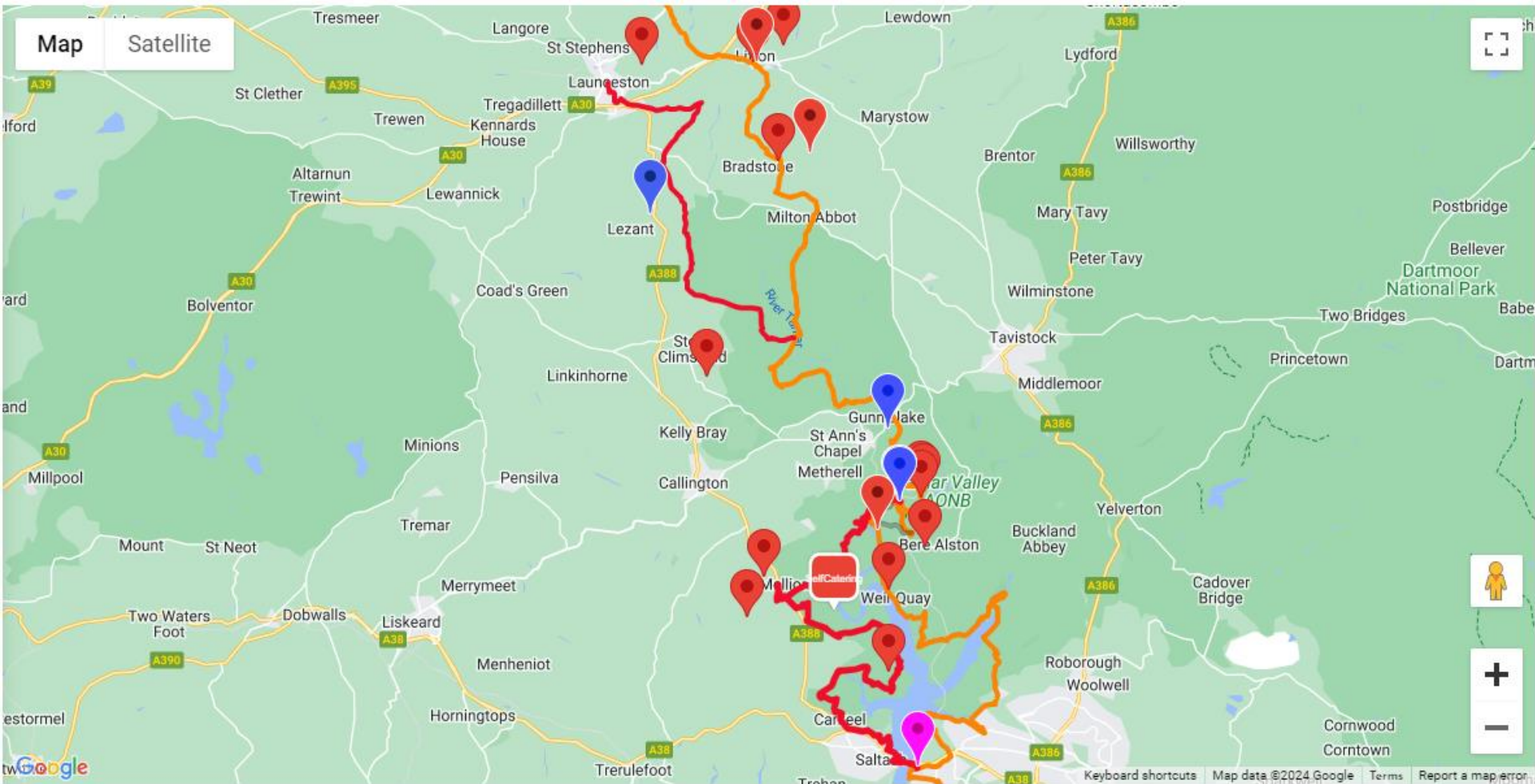
The Tamara Coast to Coast Way

Hyns Tamara Arvor dh' Arvor

Walking across the South West
Peninsula from Coast to Coast
Incorporating the Tamar Valley Discovery Trail

Steve Church

Visit Tamar Valley pages showing accommodation en route



Location markers for all VTV members along the route

Source of Tamar Marker Stone

- Installed at
Wooley Moor
- Designed by:
Esme Lawton
- Carved by:
Patrick Morgan
Imagine-Stone
- Granite from:
Cornwall quarry
- Slate from:
Delabole



Countryfile



Calstock Passenger Ferry



Thank you

