



THE  
*Arundell*

# FIELD & STREAM

*Sporting Hotel & Country Restaurant*

One of England's leading fly fishing schools, a favourite destination for shooting parties & the perfect choice for activity based getaways

# WELCOME

## *The Arundell Country Sports Hotel*

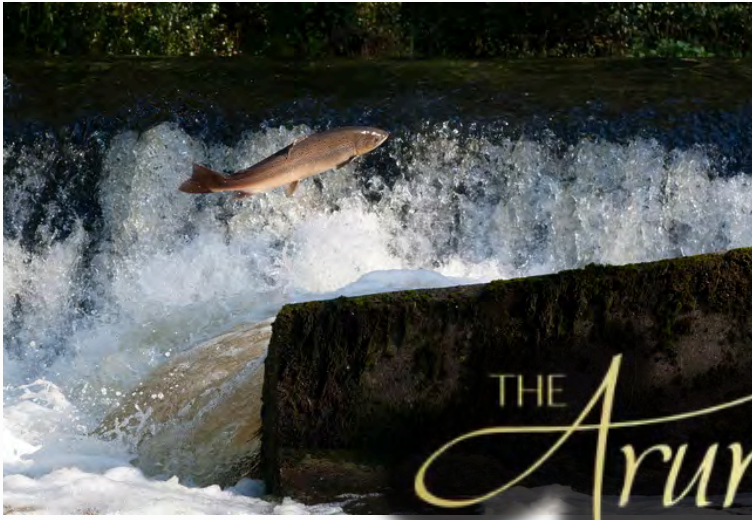
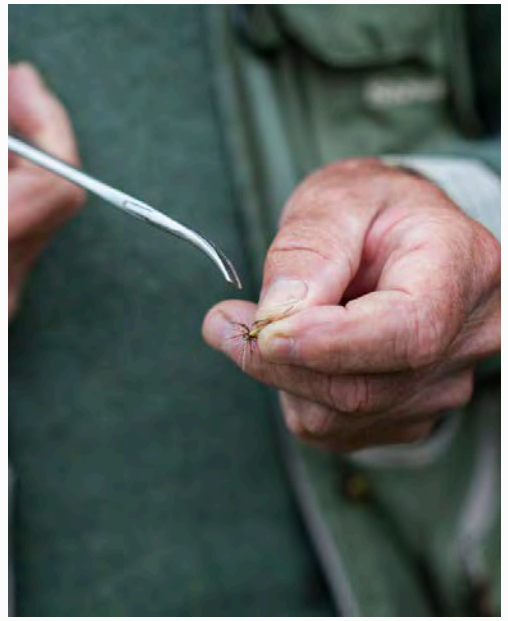
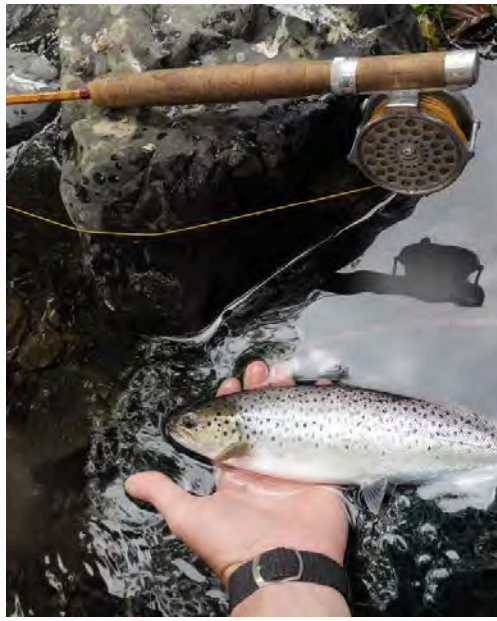
*The Arundell Arms is a small, 300 year old coaching inn located in the heart of West Devon with a sporting reputation that has somehow far outgrown Devon, to become known the world over. Whether in the north of Canada, the east coast of Australia, or on the African equator, you will find someone who has caught their first trout or shot their first Snipe at the Arundell, often following in a parent or grandparents footsteps. It is this sense of history with the Arundell that makes it special and which instils a sense of belonging in so many.*

*In the last 100 years of its 300 year history the ownership of the Arundell has only changed hands twice. In the early 1920s, it was owned by Major Morris, who ran it as a private fishing and shooting club for his Military friends. It was subsequently bought in 1961, by Anne and Gerald Fox-Edwards. Anne, later married Conrad Voss-Bark, a Times correspondent, with a wide circle of literary friends, including the poet laureate Ted Hughes, who all had a great love of fishing and good food. Anne and Conrad were largely responsible for building the Arundell's reputation as both a fishing and field sports institution and as a quiet and down to earth sanctuary away from the noise of London. It was sold by Anne's children in 2020 and its present owners, Simon Village and Arabella Monro and Mark and Noeleen Bristow are honoured to act as custodians of this institution.*

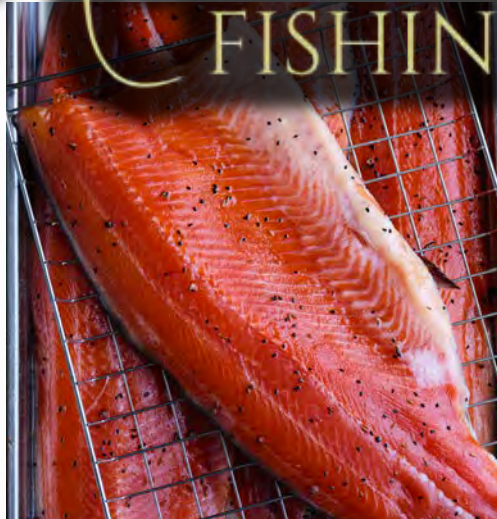
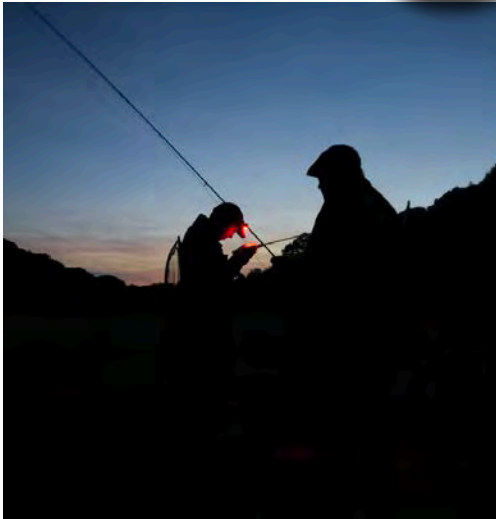
*The Arundell is a special place, and one that the new owners will endeavour to safeguard for the next generation to come. Our aim is to preserve those simple pleasures that have become so increasingly important in this fast moving and ever changing world we live in. The peace, beauty and sanctuary of the countryside, the love of locally sourced, freshly prepared food and warm hospitality, ideally enjoyed in good company and the prospects of a wild fish or a left and right!!*

*The Arundell Team*





THE  
*Arundell*  
FISHING



# RIVERS, LAKE, SALTWATER & TUITION

## *A fishing paradise*

The Arundell has long been known as one of the best fly fishing schools in the country and particularly Devon. Our 22 miles of water, which includes the Tamar and four of its tributaries, have been called a fishing paradise, with many guests coming back year after year for these totally wild waters and the fish that swim in them. Rivers range from wide and open to narrow and hard to reach and they offer fishing for wild brown trout, sea trout (especially at night) and salmon. Each beat is a mile long and completely private.

A centre of excellence in fly fishing tuition, some of our AAPGAI qualified instructors have more than 40 years' experience teaching on our rivers. As well as our six professional fly-fishing instructors, who are available for one on one tuition and guiding, the Arundell offers a number of fishing courses throughout the year. These courses cater to all levels of experience, from the beginner through to those seeking more advanced guiding or challenges. All equipment needed for fishing is available on site, to rent or buy.

We are delighted to encourage all ages as they take their first steps in a sport, which in today's busy world we believe to be the ultimate therapy.

### **Endsleigh Salmon Fishing**

The Arundell has 2 rods with the Endsleigh Fishing Club, which is in the Tamar Valley, undoubtedly one of the most picturesque and magnificent salmon waters in England. Double and single rods are offered for a week as a fully inclusive package with us, please book early as these weeks sell quickly.

### **Our Lake**

The Arundell's lake is gin clear providing exciting clear-water sight fishing for browns and rainbows.

### **Saltwater Bass and Mullet Fly Fishing**

Available on the shores of the North Devon and South Cornwall coasts with one of our experienced guides.

### **Dartmoor Fly Fishing**

The network of beautiful rivers in this incredible landscape are available to fish through the Westcountry Passport Scheme.



THE  
*Arundell*  
FISHING

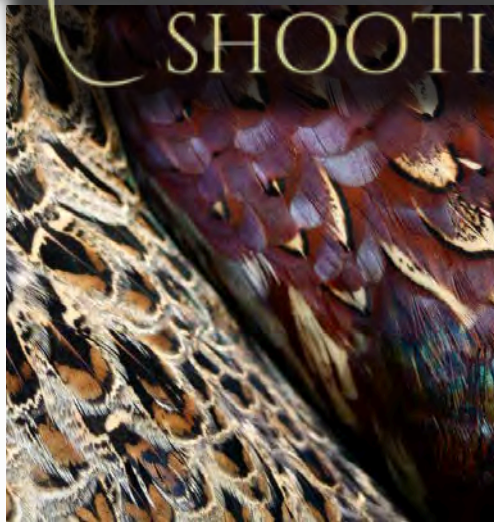


# OUR 2024 & 2025 FISHING COURSE DATES

<b>MONTH</b>	<b>ARUNDELL ACTIVITIES</b>
SEPTEMBER	Sat 7th & Sun 8th - 2 Day Beginners Fly Fishing Course
OCTOBER	Sat 5th & Sun 6th - Grayling Course. Sat 12th & Sun 13th - Grayling Course
NOVEMBER	
DECEMBER	Sat 7th & Sun 8th - 2 Day Fly Tying Course
JANUARY 2025	
FEBRUARY	
MARCH	Sat 8th & Sun 9th - 2 Day Fly Tying Course
APRIL	Sat 12th & Sun 13th - 2 Day Beginners Fly Fishing Course
MAY	Sat 10th & Sun 11th - 2 Day Beginners Fly Fishing Course
JUNE	Sat 7th & Sun 8th - 2 Day Beginners Fly Fishing Course
JULY	
AUGUST	
SEPTEMBER	Sat 13th & Sun 14th - 2 Day Beginners Fly Fishing Course



THE  
*Arundell*  
SHOOTING



# SHOOTING IN DEVON

## DRIVEN PHEASANT

The hotel has access to some excellent shooting in Devon, on Estates that present extremely “sporting” birds, owing to the fact that much of the shooting is in the unspoilt Tamar and Lyd valleys.

The shooting is only one aspect of the sport, and we therefore place as much emphasis on the hospitality and experiences around the shoot itself in an attempt to maximise the camaraderie and fellowship this traditional sport offers.

As part of our ethos, the sustainability of the shoots we work with is very important to us and as such we prefer to offer average bag sizes of between 200-300.

## WE OFFER SHOOTING ON THE FOLLOWING ESTATES:

ENDSLEIGH ESTATE

HAINÉ MANOR

SYDENHAM MANOR

These are all historic private estates, with extremely well run and organised shoots, in the most magical scenery with topography that supports challenging and sporting birds. This is shooting at its best, and for many what it is all about.

The estates are also located close to the hotel which allows breakfast to be enjoyed until 8.30am before the teams need to depart.



THE  
*Arundell*





## WILD BIRD DAYS - TEAMS OF BETWEEN 8-10 GUNS

The Arundell is historically well known for its Snipe shooting, and offers one of the most authentic field to fork experiences in terms of wild bird shooting in the UK. The shooting is driven with beaters and a team of dogs flushing the birds over the guns, who are set out along and behind hedge lines in anticipation of the "drive". The snipe is one of the fastest game birds to shoot, with speeds around 60MPH, and with a jink and dart that challenges the most capable of shooters. The satisfaction of a left and right is something that few achieve, and champagne normally flows in the bar, post shoot for anyone achieving such a feat.

*A typical day runs as follows:*

*After breakfast the guns will gather in the Arundell Cockpit, a 250 year old cockfighting pit, where Jeff Reynolds will brief the team, select pegs, load up and head to the field.*

*The guns will shoot between 9-11 drives, broken by a field lunch and drinks. After the shoot, which may include some duck flying, the guns will head to the Arundell where they will ceremonially hand the "bag" to the Arundell chefs.*

*The birds are prepared in the most delicate way, with the breast pan-fried in brandy, and served with the Arundell's specially whisked duck-liver mousse, and served on croute topped with crisped onion and red-wine jus, and then washed down with a glass of champagne. A most respectful way to honour the bird! Dinner is a game tasting menu, which includes dishes of venison, pheasant and partridge all shot and prepared by the Arundell. After dinner drinks and cigars are in the private Cock-pit bar.*

*As all the birds are wild and migrate to the UK between November and January, the days offered for these events are limited, so do book well ahead of the season to avoid disappointment. The drives are generally limited to being shown some 40-60 birds, clearly with a lower rate of success, as the snipe are a more challenging quarry for the shooting connoisseur, with success rates around 12-15/shot fired.*

# FIELD TASTING MENU

This year's shooting tasting menu has been designed with a focus on finding a balance in presenting our most popular dishes from last year but also ensuring that our 'eat local and seasonal' ethos is at the fore. With our venison all shot locally and butchered by Jeff Reynolds, and our pheasant coming in from the local estates; we try to keep our food miles all within a 5 mile radius. Texture and balance of flavour is paramount in the shooting menu. The richness of the game has been considered in each course to ensure the accompaniments not only bring out the best but also enhance the flavours. The dessert this year is a sharp pallet cleanser before enjoying one of Cornwall's finest cheeses together with apples from our garden.

As always we are excited for the start of the shooting season and the chance to be creative. It is an honour to work with the snipe and woodcock from the wild shoot bag. In the kitchen within a few hours, the flavours of these birds are already exceptional and it is fantastic to be able to create something delicious for the early evening canapés.

*Phillip Old*

## SAMPLE SHOOTERS TASTING MENU

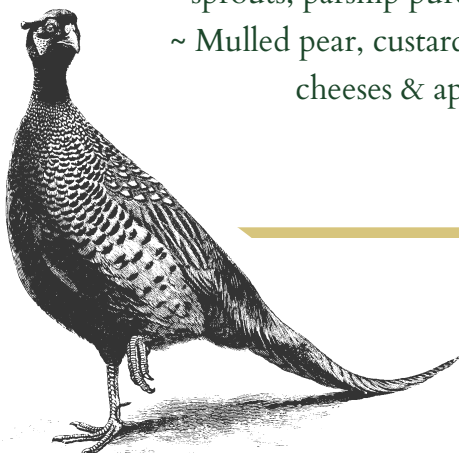
Devon spiced venison carpaccio,  
blackberry, rocket & Parmesan

~

Lyndon Estate red legged  
partridge, puy lentils & plum

~

Ballotine of pheasant, pancetta,  
sprouts, parsnip purée & sherry  
~ Mulled pear, custard tart ~ Local  
cheeses & apple





THE *Arundell*



EXECUTIVE  
RETREATS



# STRATEGY & TEAM BUILDING

*'Harnessing your team's full potential'*

*A Unique Private Getaway for Tailor-Made Executive Team Events*  
*"With advanced bookings guests will have exclusive use of the whole coaching inn which is extremely well equipped and self sufficient to host group events"*

## FACILITIES

- 21 bedrooms
- Separate private 2 bedroom cottage
- Bar
- Dining Room
- Library
- Historic "Cockpit" Private Room
- Conference Room (Up to 80)
- Board Room (Up to 20)
- Two smaller breakout meeting rooms (4-6)
- Transport from within the UK arranged on request
- Full catering by our in-house kitchen and hospitality team, serving local produce, prepared on site; from working lunches to fine dining with wine pairing, and wine and whisky tasting events

## GROUP ACTIVITIES

- Fly fishing tuition on the hotel's own 22 miles of rivers for wild brown trout, sea trout, salmon & grayling
- 6 highly qualified and experienced fishing guides
- Private lake stocked with rainbow trout, perfect for our field to fork experience
- Walking, orienteering, cycling & horse riding on the nearby Dartmoor National Park
- Experienced Dartmoor guides for walking and survival experiences
- Clay pigeon shooting
- Leadership & motivational speakers – we have access to an eclectic mix of speakers from the UK and abroad that can be tailored to suit your team building objectives

*The hotel is well staffed and fully equipped to run Team Building group activities within close proximity to the hotel.*

*Our Events Manager, Jackie Elford, will work with you to develop the itinerary, format and budget for your event.*





# WALKING AND CYCLING AT THE ARUNDELL

The landscape of Dartmoor is breath-taking. The wide-open rolling moorland extends for 386 square miles with deep river valleys cutting through heathland and craggy granite tors emerging as finger points in the distance. Criss-crossed with farmland, old woodland, ancient walls and even ruins dating back to the Bronze Age, the moors have a climate that can vary from valley to valley and are regularly used for training exercises by the British Army.

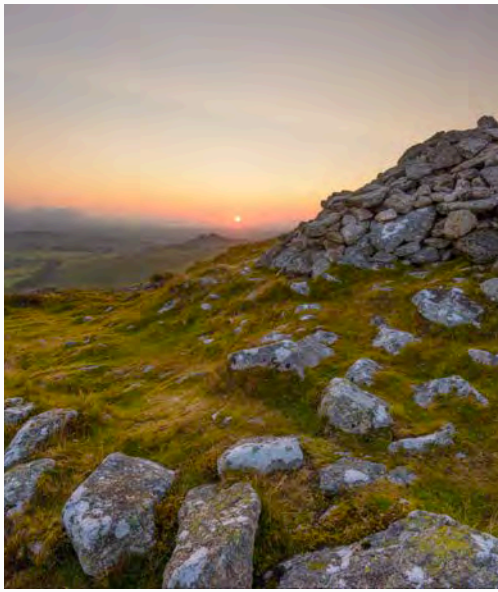
Our highly trained and knowledgeable guides are qualified to teach basic navigation, bushcraft and flora and fauna identification and are very experienced in running team survival events, group orienteering or walking tours, which entertain with historical anecdotes and outlandish tales.

Our hospitality team can provide a fantastic open air field lunch out on the moors, an experience in itself.

We offer bicycles and e-bicycles, which are perfect for exploring the Tamar Valley, Dartmoor or the Granite Way, which is an 11-mile trail running from Okehampton to Lydford and is mainly traffic free. On leaving Okehampton, you will have breathtaking views of Dartmoor and see the ruins of Okehampton Castle, destroyed by Henry VIII in 1539 the castle was originally owned by the Earl of Devon, who was executed for treason.

The Tamar Way Coast to Coast Walk is an 87 mile, 7 day walk, which follows the route of the River Tamar from the city of Plymouth, through the Tamar Valley to its source on the North Cornwall coast. A well balanced walk, which was launched just a year ago and is a wonderful way to discover this beautiful part of the world.





# LOCAL WALKS & LOCAL PLACES

## *Devon & Cornwall*

Exploring and appreciating the local countryside is at the heart of what we stand for at The Arundell, from the produce we use to the country sports we offer.



- 1. TWO CASTLES TRAIL**  
A 24 mile waymarked walking route between Okehampton and Launceston Castles. Starting on the western side of Devon and finishing just inside Cornwall, the walk meanders through rolling countryside full of history.

The Two Castles Trail takes you through beautiful and peaceful countryside – from the edge of Dartmoor, past historic battlegrounds to the ancient capital of Cornwall – linking the Castles of Okehampton in the east and Launceston in the west.

- 2. TAMARA COAST TO COAST**  
An extraordinary 87 mile journey of discovery from the vibrant city of Plymouth to the very source of the Tamar River. Designed as a week long journey, divided into seven stages each of which could be completed in a day. Stage 4, Gunnislake to Lifton, passes directly past our door!

**Stay with us for a 2 or 4 night package, which includes DBB, picnics and transport from the end of stage 2 at Bere Ferrers through to Boyton.** We can also arrange luggage transfer from Bere Ferrers.

- 3. NORTH BRENTOR, TAVISTOCK**  
**PL19 0LB (15 mins drive)**  
A picturesque picnic spot at one of the most impressive rock outcrops in Dartmoor. The 12th Century church of St Michael de Rupe at its top, it makes a distinctive and famous silhouette on the Dartmoor skyline. The tor is unusual as it is one of the few on Dartmoor not to be made of granite. In fact, it is formed from basaltic lava which flowed some 350 million years ago into a shallow sea that covered the area during the Lower Carboniferous and Devonian periods.

- 4. LYDFORD**  
**Near Tavistock, Devon EX20 4BH (10 miles drive)**  
The deepest river gorge in the south west, Lydford Gorge is filled with temperate rainforest and designated as a site of Special Scientific Interest. The 30m high waterfall is spectacular and the rugged gorge can make for a challenging and rewarding hike.



# LOCAL PLACES & ACTIVITIES

## Devon & Cornwall

### 1. GRANITE WAY

This 11 mile trail which runs from Okehampton to Lydford is used for cycling, running, hiking and horse riding. Mostly off-road, the trail offers spectacular views of Dartmoor's granite landscape. Bicycle hire available from Devon Cycle Hire.

### 2. CHOLWELL RIDING STABLES

Ride straight out onto the beautiful open moorland of Dartmoor. Cholwell Riding Stables is a family-run business that has been providing escorted rides and riding lessons on Dartmoor for fifty years.

Situated on the A386 between Okehampton and Tavistock, next to the famous 'Wheal Betsy' Silver Lead mine, we are perfectly located to ride straight out onto Dartmoor with no need for any road work. This allows you to enjoy your whole ride on the moor and admire its breathtaking views (weather permitting!) They cater for all types of rider from the complete novice to the most experienced rider and have a wide selection of quality, fit and well-mannered horses.  
[www.cholwellridingstables.co.uk](http://www.cholwellridingstables.co.uk)

### 3. ROADFORD LAKE

Situated in the Wolf Valley, just a couple of miles from the centre of Lifton, Roadford is the largest inland water body in the south west offering an abundance of activities from water sports to cycling, archery and walking.

[www.swlakestrust.org.uk/roadford](http://www.swlakestrust.org.uk/roadford)

### 4. CANOE TAMAR

Take a scenic paddle from the historic Quay at Cotehele up river, past the village of Calstock and into the wilds of the upper tidal limits.

[www.tamartrails.co.uk/canoe-tamar](http://www.tamartrails.co.uk/canoe-tamar)

Our Delicatessen is open every day offering a cosy space for a hot drink, a light bite, to pick up those last minute groceries or a fabulous bottle of wine! We serve a delicious array of freshly baked cakes, salads, quiches, pizza slices, hot sausage rolls and pasties. Our sandwiches are made fresh every day using bread baked in our own kitchens and our range of salads are perfect with a chorizo scotch egg or a spinach pastry.

The Deli is open Monday – Sunday 8:00 – 16:00 in the winter & Monday – Sunday 8:00 – 18:00 in the summer. Picnic hampers can be arranged from our deli.



## HOUSES & GARDENS *Devon & Cornwall*

- 1. Cotehele - St Dominick, near Saltash, Cornwall, PL12 6TA**

An atmospheric Tudor house with Medieval roots, a mill on a historic quay, a glorious garden with valley views and an expansive estate to explore.

[www.nationaltrust.org.uk/visit/cornwall/cotehele](http://www.nationaltrust.org.uk/visit/cornwall/cotehele)
- 2. Castle Drogo - Drewsteignton, near Exeter, Devon, EX6 6PB**

Where dramatic architecture meets innovative family home. A 20th century castle overlooking the Teign Gorge.

[www.nationaltrust.org.uk/visit/devon/castle-drogo](http://www.nationaltrust.org.uk/visit/devon/castle-drogo)
- 3. Lanhydrock - Bodmin, Cornwall, PL30 4AB**

Magnificent late Victorian country house with garden and wooded estate.

[www.nationaltrust.org.uk/visit/cornwall/lanhydrock](http://www.nationaltrust.org.uk/visit/cornwall/lanhydrock)
- 4. Buckland Abbey - Yelverton, Devon, PL20 6EY**

Discovery, tranquillity and history – an ancient gem in the Tavy Valley landscape. Once home to Sir Francis Drake, explore a medieval abbey converted into a Tudor house.

[www.nationaltrust.org.uk/visit/devon/buckland-abbey](http://www.nationaltrust.org.uk/visit/devon/buckland-abbey)
- 5. RHS Rosemoor - Great Torrington, Devon, EX38 8PH**

Nestled in a Devon valley, RHS Garden Rosemoor blends formal and informal plantings to magical effect.

[www.rhs.org.uk/gardens/rosemoor](http://www.rhs.org.uk/gardens/rosemoor)
- 6. Lost Gardens of Heligan - St Austell, PL26 6EN**

A botanical garden in Cornwall - Step back in time and lose yourself in Europe's largest garden restoration.

[www.heligan.com](http://www.heligan.com)
- 7. Eden Project - Bodelva, Cornwall, PL24 2SG**

Explore massive covered Biomes to trek through one of the world's largest indoor rainforests and immerse yourself in the calm fragrance of the Mediterranean Biome.

[www.edenproject.com](http://www.edenproject.com)



The Arundell  
Lifton  
PL16 0AA

[www.thearundell.com](http://www.thearundell.com)  
01566 784 666  
[bookings@thearundell.com](mailto:bookings@thearundell.com)

THE  
*Arundell*  
HOTEL AND RESTAURANT